

Date: 2017/20/04

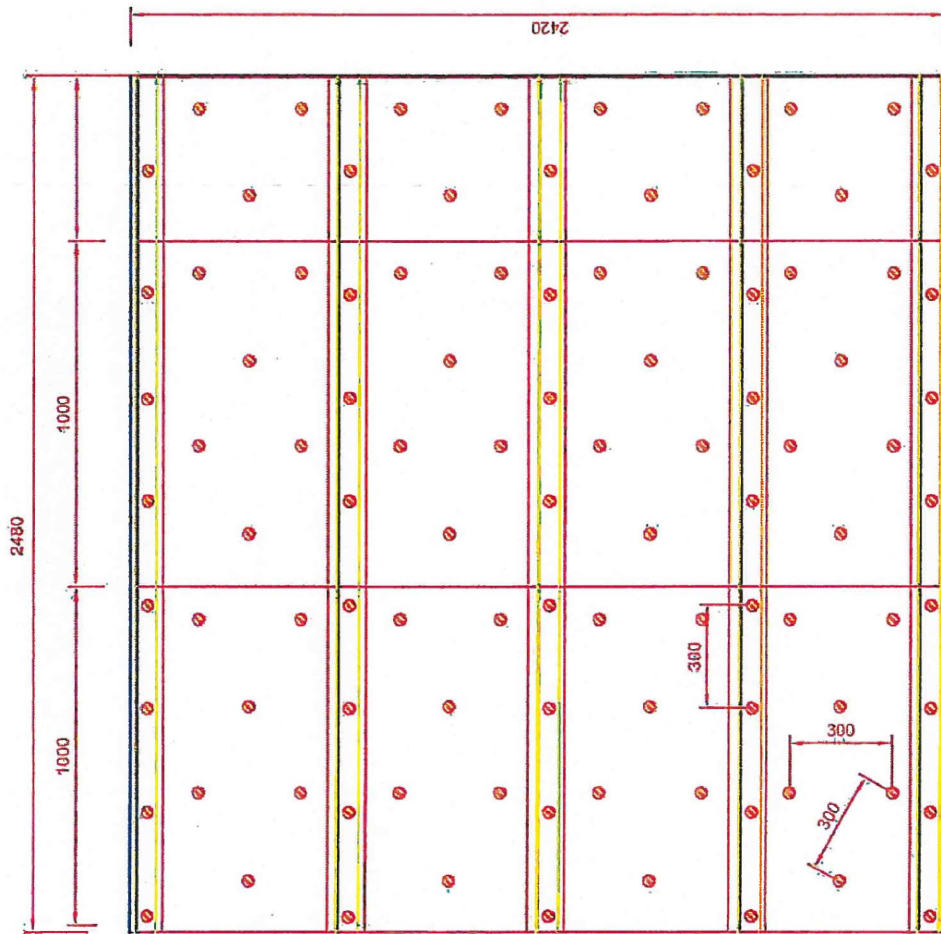
Subject: A-30 Bulkhead SeaRox SL 620/ SeaRox SL 620

ROCKWOOL®
TECHNICAL INSULATION



ROCKWOOL®

TECHNICAL INSULATION



All measurements in mm

Bulkhead

Date: 2016/12/21

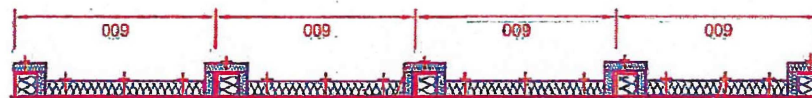
Subject: A30 Bulkhead, SeaRox SL 620 - 40/25 mm

Designer: DG

Rev.:

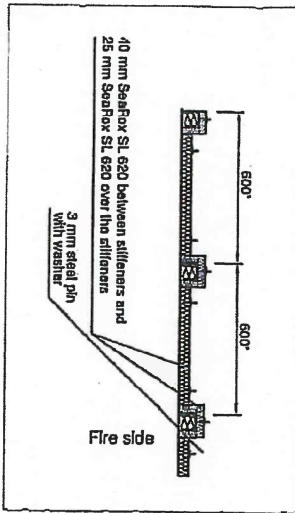
Scale: 1:20

Dwg No.: 522

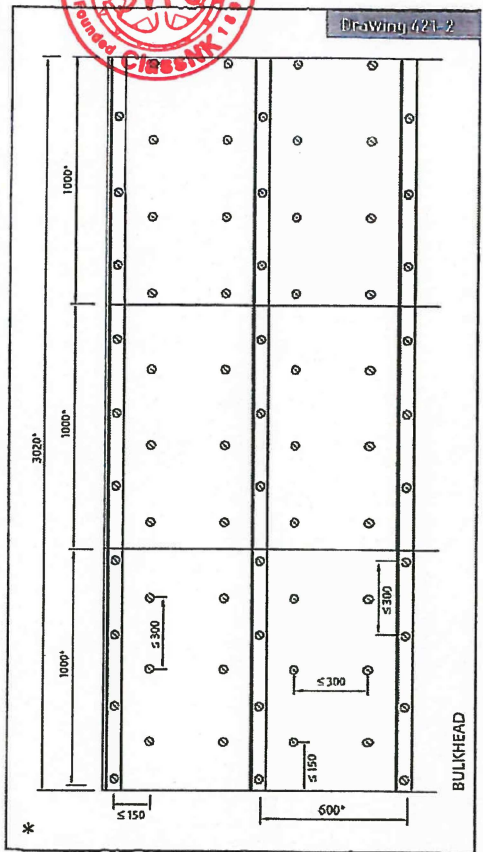
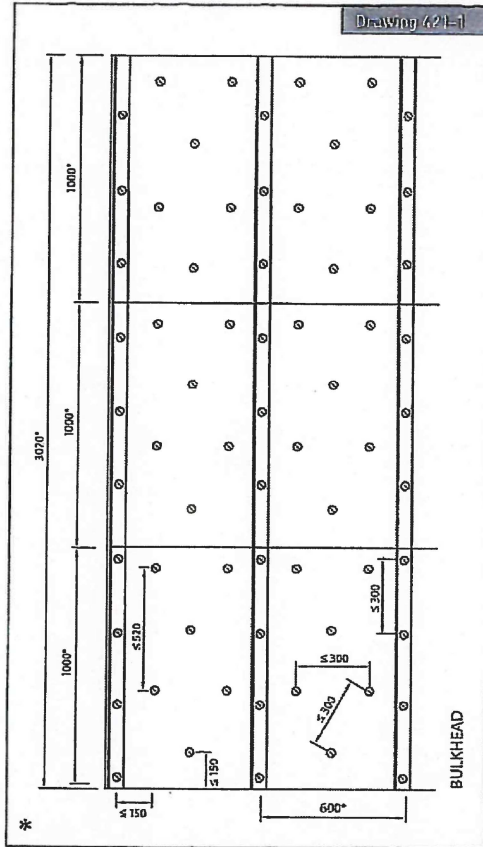


40 mm SeaRox SL 620 between stiffeners and
25 mm SeaRox SL 620 over the stiffeners

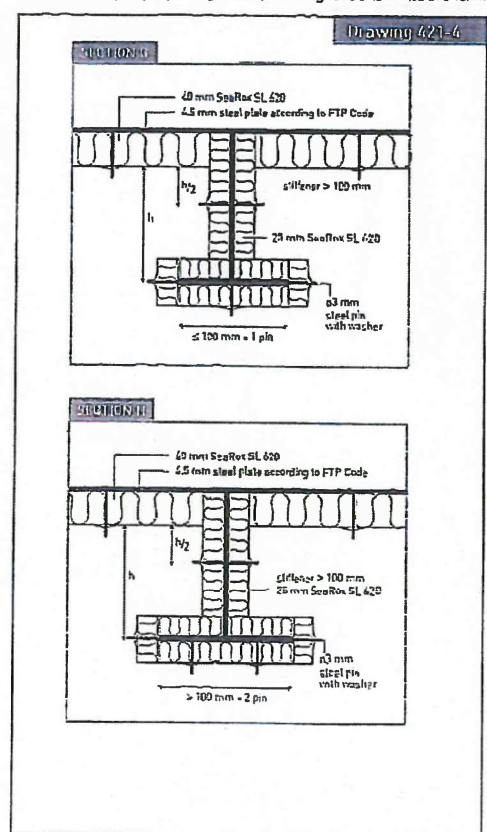
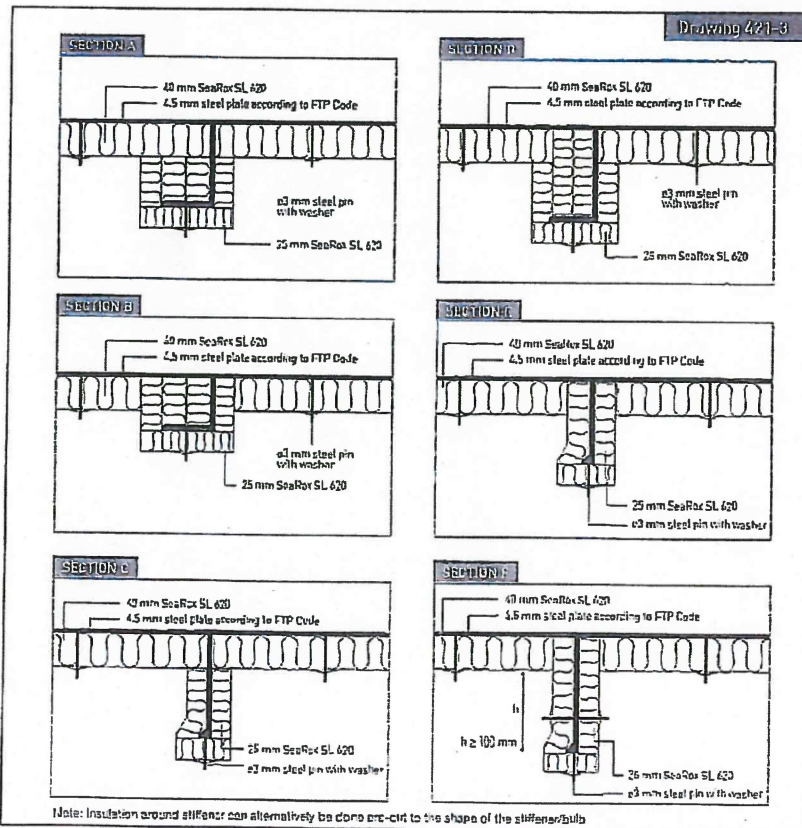
30 mm steel pin with 30mm washer



Dentsu Institute of Fire and Security Technology
File no. PHA109066



* Dimensions may vary depending on structural design and size of insulation slab.



All measurements in mm

Date: 2017/02/09

Subject: A-30 Bulkhead SeaRox SL 620/ SeaRox SL 620

Assessment Report Nos.:

ROCKWOOL®
TECHNICAL INSULATION